

Room Sheet

Explorers – Narratives of Site

Plan of Woodford Academy courtesy of the National Trust



Explorers: narratives of site in contemporary art practices is an extended, multilayered, accumulative exhibition project, which responds to the complex and overlapping narratives of the historic Woodford Academy site. The exhibition (at 90-92 Great Western Highway Woodford) opens on Saturday 7 October 2017. It is also open on Saturday 21 October and Saturday 18 November 2017.

The exhibition has been developed by Modern Art Projects (MAP) Blue Mountains in conjunction with Woodford Academy and supported by funding from Create NSW. The show involves a group of 17 Blue Mountains and Western Sydney contemporary artists and is being co-curated by Beata Geyer and Mahalya Middlemist.

The idea of 'exploration' has been a strong narrative associated with the Blue Mountains and predominant discourses on colonialist Australia. In Explorers: narratives of site artists and curators explore other, lesser-known narratives, including pre-colonial perspectives and traditional cultural stories, historic accounts and urban myths.

Intrinsic to the artistic vision of the project is the facilitation of a deep engagement with the cultural and architectural heritage of the site through a concept development phase. Artists and curators have engaged in explorations of stories, both historical and traditional, as well as with the material traces of the past through explorations of archival materials, the landscape and architecture.

Artists working across a range of media, including painting, installation, performance and time-based media within the framework of contemporary art practice have made new work in response to the historical and cultural resonances of the site. Three broad themes – Stories, Mapping the Terrain and Architecture inform the curatorial approaches to this exhibition.



17

16

15

13

14

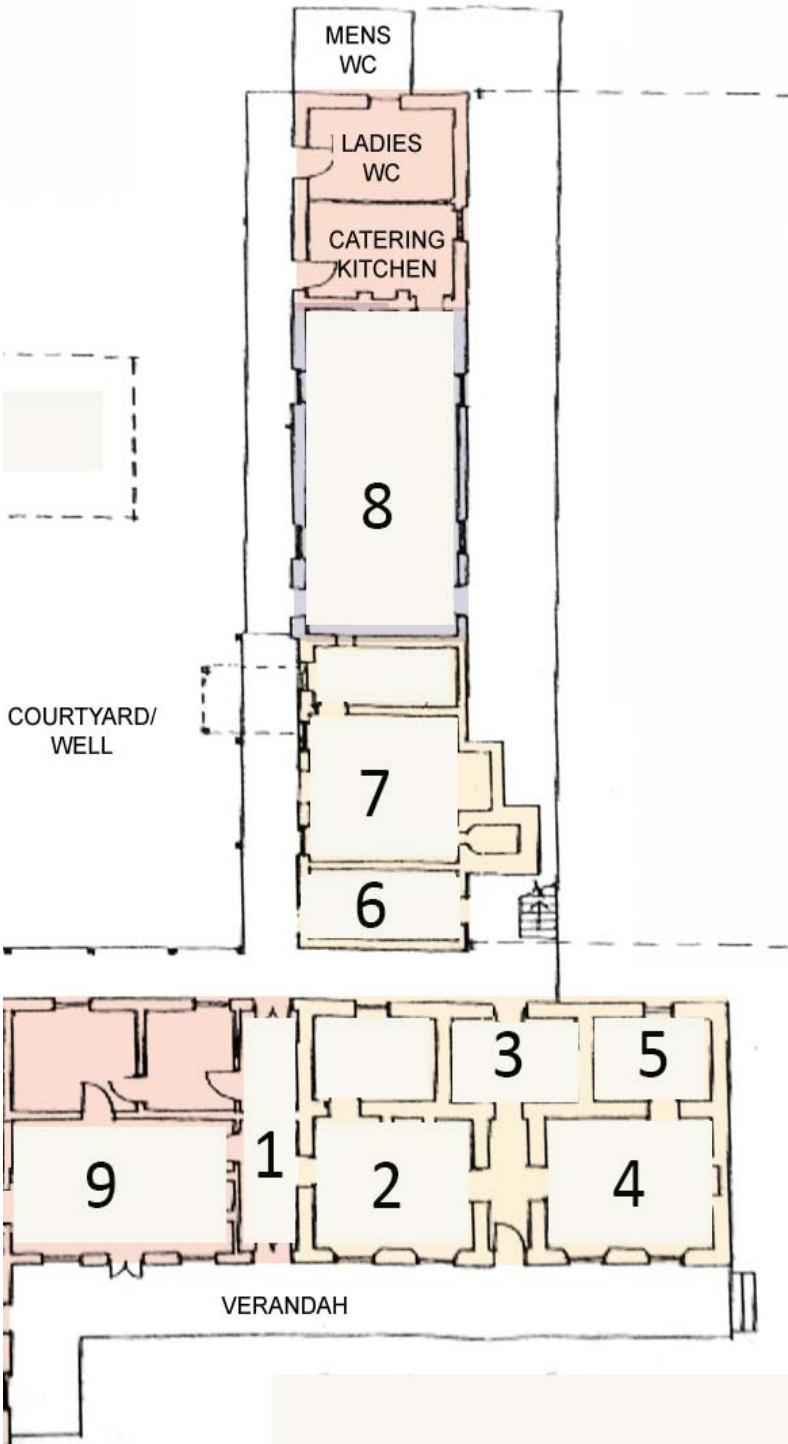
10

11

12

ATTIC

GROUND FLOOR



Explorers: Narratives of Site - Room Sheet

1 Vicky Browne <i>Birds and Space</i> , Turntable, lathe-cut polycarbonate record, glass, laser toner powder, lead came and thermal foil.	10 Danica Knezevic (see also under performances) <i>Dissolution Line</i> , and <i>Windows</i> , HD Video, 7:54 min and 4.05 min
2 Melissa Grahovac <i>S/WEEP</i> , porcelain clay, resin and found objects.	11 Dark Room (Sean O’Keeffe and Carolyn Eccles – see also under performances) <i>The Catherine Collitts Project</i> , grey human hair, lock 360 degree video, live performance, chair, soil and Tarmac.
3 Mahalya Middlemist <i>Boy</i> , HD video three minutes.	12 Daniel Kotja <i>Nimrod</i> , tweet feed on iPad.
4 Ian Milliss <i>Statement of Insignificance</i> , text-based work on paper.	13 Michael Petchkovsky and Emma Rooney (see also no.5) <i>Pitch falling map line</i> , mixed media installation and projection.
5 Michael Petchkovsky and Emma Rooney (see also no.13) <i>Slow Burn for John and David</i> , mixed media installation and projection	14 Miriam Williamson (see also no. 17) <i>Seeds of Empire</i> , animal skins, botanical specimens, audio, antique furniture.
6 Fiona Davies <i>Painting the Throat</i> , zinc, glass, iodine, ink, rice and other papers.	15 Jacqueline Spedding <i>Skyscapes</i> , charcoal on archival blotting paper, mixed media installation,
7 Anne Graham <i>The Beehive Lady and The Beehive Observatories</i> , with music by Boris Hunt titled <i>The Transit of Beeness</i> , sound, LED globes, steel, fabric, beekeeper’s hat and beehive.	<u>GARDEN LOCATIONS:</u> 16 Sarah Breen Lovett <i>Contemplating the Void</i> : recycled cotton on Eucalyptus bark & sticks, dimensions variable; sound recording 8 minutes loop.
8 Vivienne Dadour <i>Illustrated: Women, Work and War 1940-1946</i> , prints, archival material, frames, text and found objects.	17 Miriam Williamson (see also no. 14) <i>Seeds of Empire</i> , animal skins, botanical specimens, audio, antique furniture.
9 Beata Geyer <i>Colouring Space: Empire Neptune Blue</i> , mdf and acrylic paint.	<u>CO-CURATORS:</u> Beata Geyer and Mahalya Middlemist *All works 2017 unless otherwise stated
<u>PERFORMANCES:</u> Dark Room (Carolyn Eccles) –at no. 11 following opening (approx. 2:00pm) Danica Knezevic – <i>Ready to Hand</i> inside and in the grounds throughout the day	